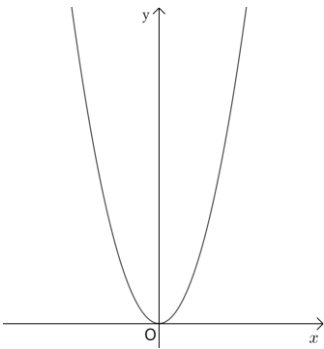


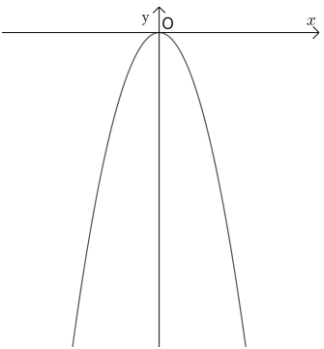
2次関数と変域 (グラフ③)

1 次の条件のとき、変域を求めなさい。

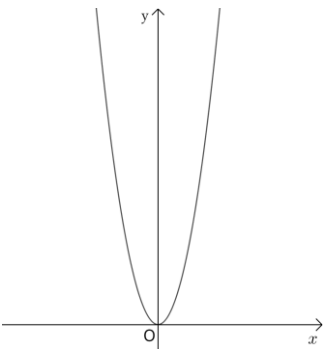
① $y = x^2$ ($-1 \leq x \leq 4$)



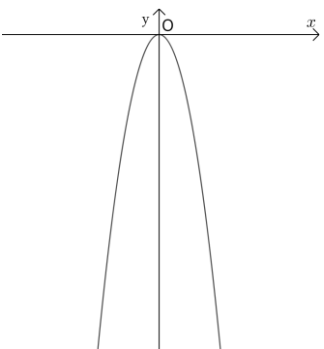
② $y = -x^2$ ($-2 \leq x \leq -1$)



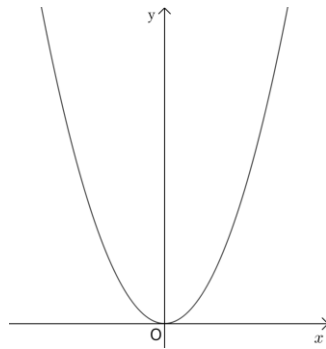
③ $y = 2x^2$ ($1 \leq x \leq 3$)



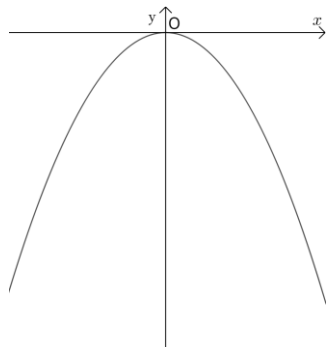
④ $y = -2x^2$ ($-2 \leq x \leq 5$)



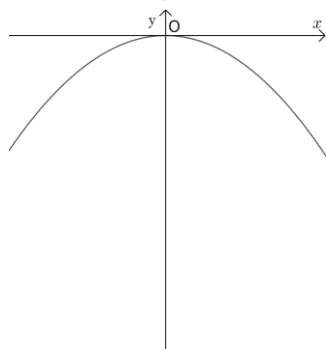
⑤ $y = \frac{1}{2}x^2$ ($-4 \leq x \leq 6$)



⑥ $y = -\frac{1}{4}x^2$ ($2 \leq x \leq 6$)



⑦ $y = -\frac{1}{9}x^2$ ($-9 \leq x \leq -3$)



⑧ $y = \frac{3}{5}x^2$ ($-3 \leq x \leq 1$)

